



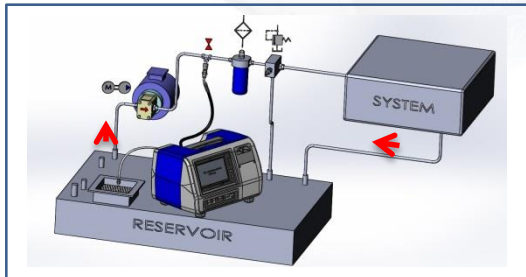
Pall Corporation

The PCM500 Series Portable Fluid Cleanliness Monitor QUICK GUIDE

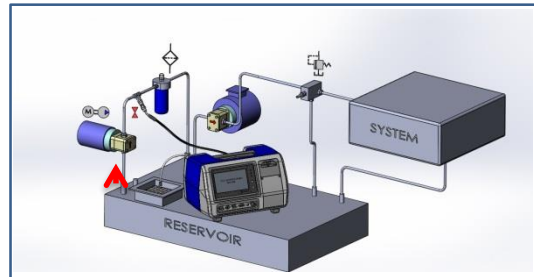


GETTING STARTED Connecting the PCM500

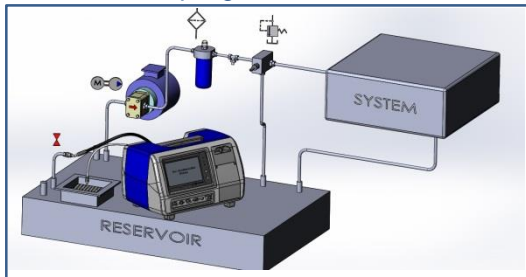
High pressure line (0 to 315 bar)



Low pressure line (0 to 1 bar)



Reservoir Sampling




Bottle Sampling



- Connect PCM inlet to the system on-line pressure connection, or alternatively to the system reservoir using the high pressure black hose, stored in rear of the unit
- Connect PCM outlet to a suitable container (1 litre per test), or return it to the system reservoir using the clear hose
- Connect the PCM monitor to the mains power supply issued; 100 - 240 VAC (auto ranging), 47-63 Hz, or use internal battery power



Figure 1: Main Menu

All operations are made via the Colour Touchscreen. Press and release the Power On/Off button  on the front panel.

- A green LED Light will flash for several seconds
- An introduction screen appears followed by the Main Menu (Figure 1)



Select **Tools** to set Time, Date, and PCM label

Select to set preferred language. Congratulations. You are now ready to start monitoring!



The PCM500 Series Portable Fluid Cleanliness Monitor QUICK GUIDE



STARTING A TEST

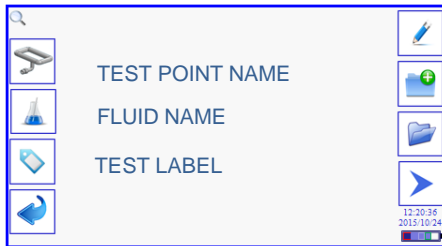


Figure 2: Test Configuration Screen

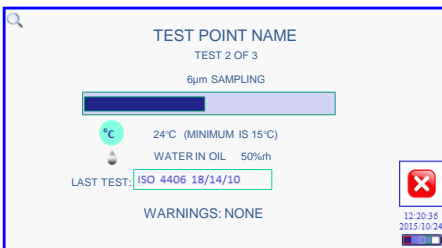


Figure 3: Test Progress Screen

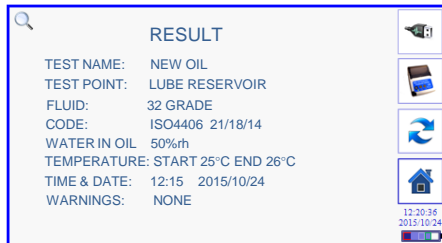


Figure 4: Results Screen

Go to 'Test Configuration' screen.

- Select the left hand icons to Set up the test data using the on-screen keyboard
- When set-up is complete, select the RIGHT arrow icon to START the test
- If the fluid temperature is below the parameters set for testing, the PCM500 will cycle the fluid until target temperature is reached and the test will begin

- Each tests takes approximately 6 minutes. A progress bar is displayed during test. Should any test parameters be exceeded, a 'Warning Label' will be displayed but the test will continue. (Fig. 3)

- Single or multiple results are displayed on-screen. Results can be stored, uploaded or printed using the right hand icons. (Fig. 4)
- The same test can be repeated by selecting the REPEAT icon. The PCM will backflush to clean the membranes before each test

Refer to the Operating Procedure Flow Chart for more information on test options and data management.

PCM500 Series Fluid Changeover Procedures

“WHEN CHANGING FROM MINERAL OIL TO WATER BASED FLUIDS OR VICE VERSA A STRICT FLUID CHANGE OVER PROCEDURE MUST BE ADHERED TO.”

- The recommended changeover fluid is “Rustveto NTP 32”
- All flush fluid should be drained into a suitable waste container and disposed of accordingly

Mineral oil to water based fluids:

- 1 Operate the PCM500 monitor in warm up mode via the black inlet hose, continue until no traces of mineral oil are visible in the return line hose.
- 2 Run at least 3 complete tests via the black inlet hose, or continue tests until no traces of mineral oil are visible in the return line hose.

Water based fluids to mineral oil:

- 1 Operate the PCM500 monitor in warm up mode via the black inlet hose, continue until no traces of emulsion are visible in the return line hose.
- 2 Run at least 3 complete tests via the black inlet hose, or continue tests until no traces of water/oil emulsion are visible in the return line hose.



The PCM500 Series Portable Fluid Cleanliness Monitor ICON GUIDE

Main Menu



Home Set-up Tools File Info Language

Navigation



Previous Confirm Undo Cancel Up Down Forward Back

Editing & Data



Delete Create Open Edit

Warnings



Critical Warning Shutdown Contact

Tools and Functions



Set Label Clock Date Format Print

Communication



Export Bluetooth Setup Wi-Fi Setup Comms Port

ISO4406 _/*/*	AS 4059 Table 1	°C
ISO 4406 */*/*	AS4059 Table 2 */*/*	°F
ISO 4406 Format	AS4059 Table 2 _/*/*	Temp. Format
	AS 4059 Format	

Testing



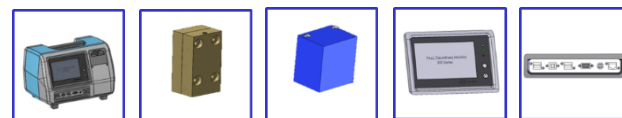
Test Point Fluid Test Label Water in Oil Repeat Alarm Set-up

Data Management



Upload to Flash Drive Download to PCM Test Label Result Warning Select All Graph

Information



PCM500 Spec Mesh Settings Battery Data Control Panel Comms. Ports



Pall Corporation

The PCM500 Series Portable Fluid Cleanliness Monitor Menu Flow Chart

